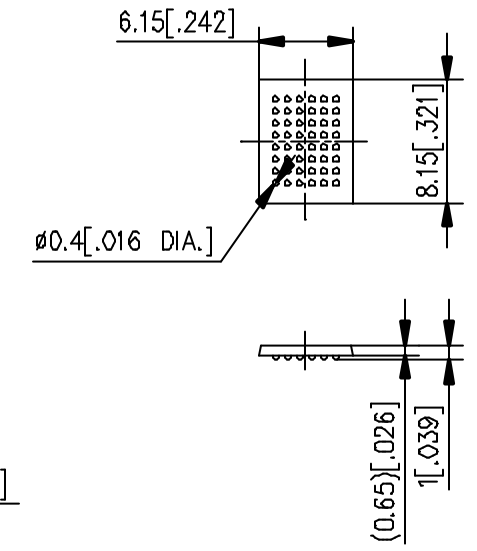
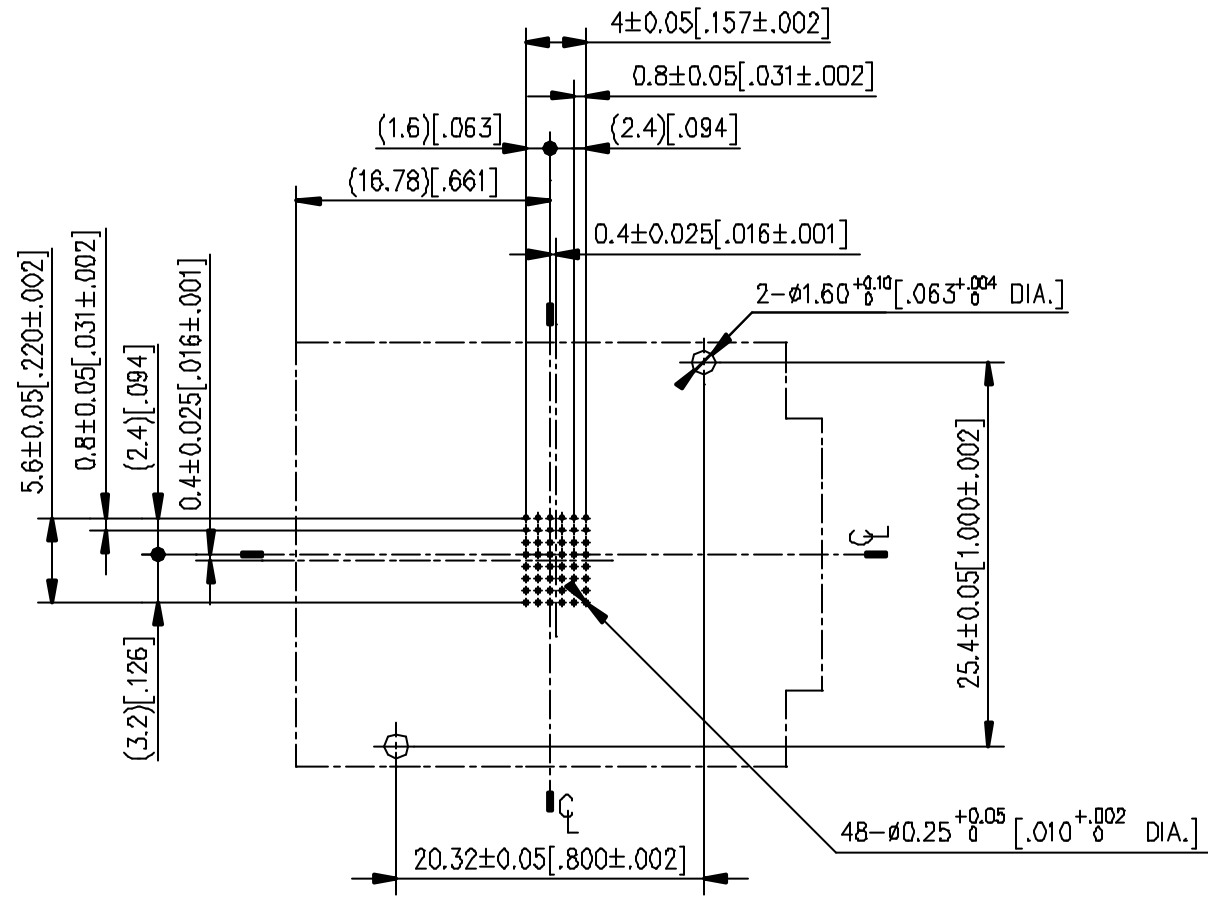
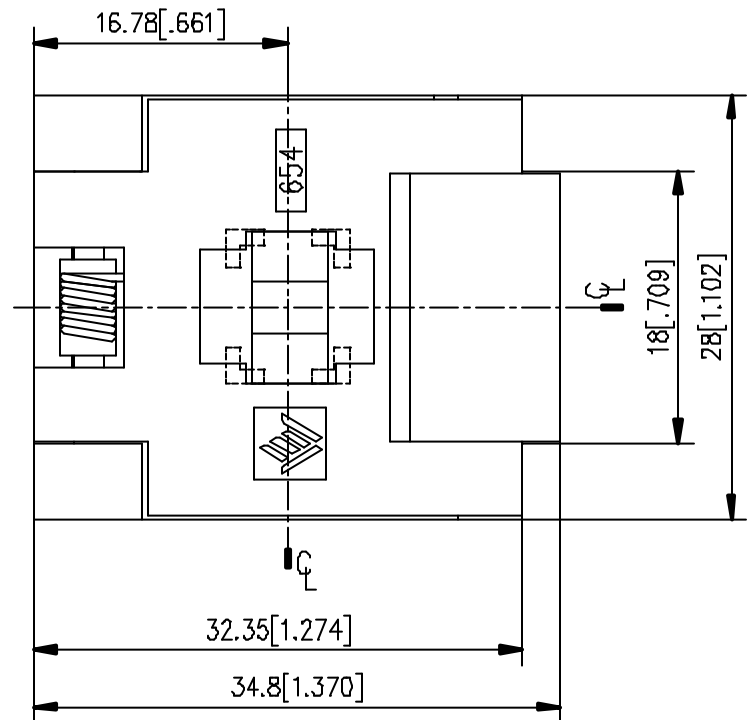
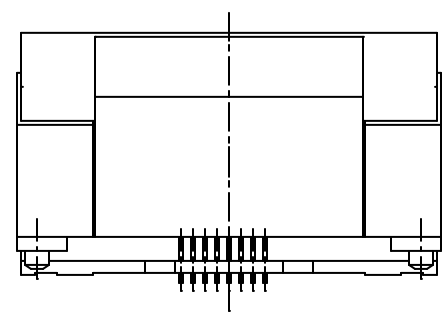
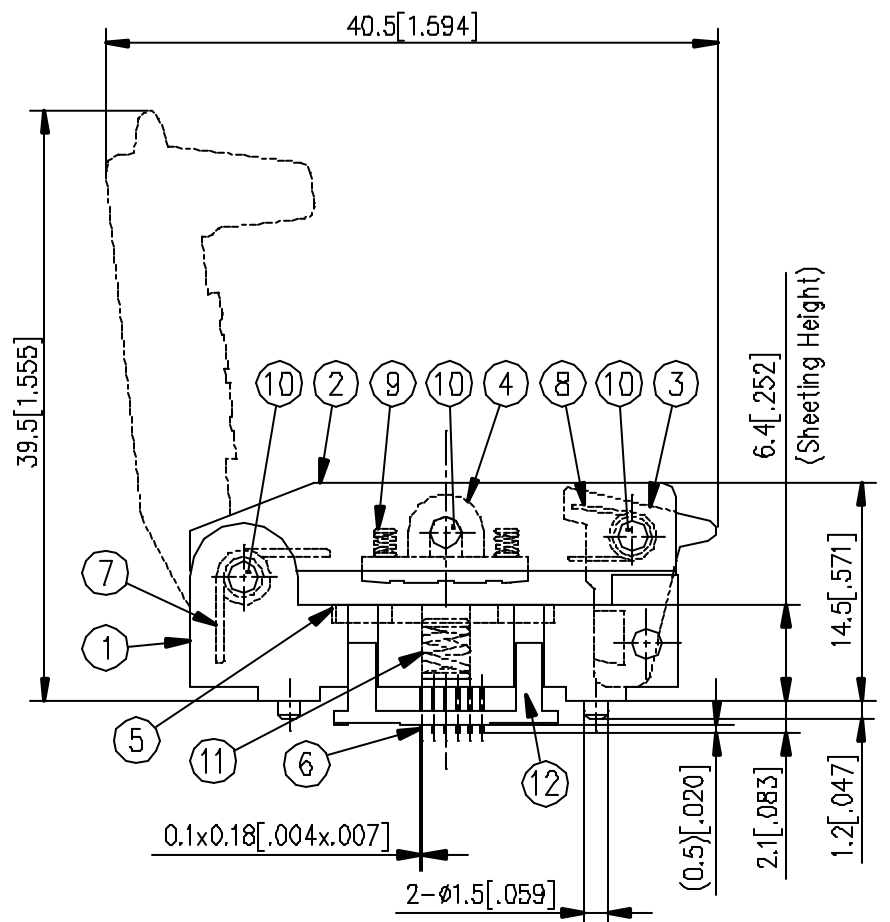


REV	DATE	DESCRIPTION	BY
0	May 29 1997	ERN97066	M,N



基板実装穴あけ寸法図(表面透視)  
FOOTPRINT AS VIEWED LOOKING DOWN  
FROM TOP OF SOCKET

適合IC外形図  
RECOMMENDED IC (REF)



⑫	LOCATOR	LCP	1	COLOR : BLACK
⑪	FLOATING PLATE SPRING	SUS	2	
⑩	SHAFT	SUS	3	
⑨	PRESSURE PAD SPRING	SUS	4	
⑧	LATCH SPRING	SUS	1	
⑦	LID SPRING	SUS	1	
⑥	CONTACT	Be Cu	48	PLATING : Ni-Pd
⑤	FLOATING PLATE	PES	1	COLOR : BLACK
④	PRESSURE PAD	PPS	1	COLOR : BLACK
③	LATCH	PPS	1	COLOR : BLACK
②	LID	PPS	1	COLOR : BLACK
①	BASE	PEI	1	COLOR : BLACK

P.NO	PART DESCRIPTION	MATERIAL	QTY	NOTE
GENERAL TOLERANCES ±0.3 [±.012]				
UNIT	SCALE	ANGLE	TITLE	
mm[in.]	2/1	3rd.	FBGA Socket (0.8mm Pitch 6x8 48P) PKG SIZE 6x8	
DRAWN	/	/	PARTS NO. 654048628010806	
CHECKED	/	/	DWG NO. 654MSA006	
APPROVED	/	/	REV 0	SHEET 1/1

**WELLS JAPAN LIMITED**  
ウェルズ・ジャパン株式会社